

FEATURES / BENEFITS

Reduces Suture Hole Bleeding*

Non-Biologic

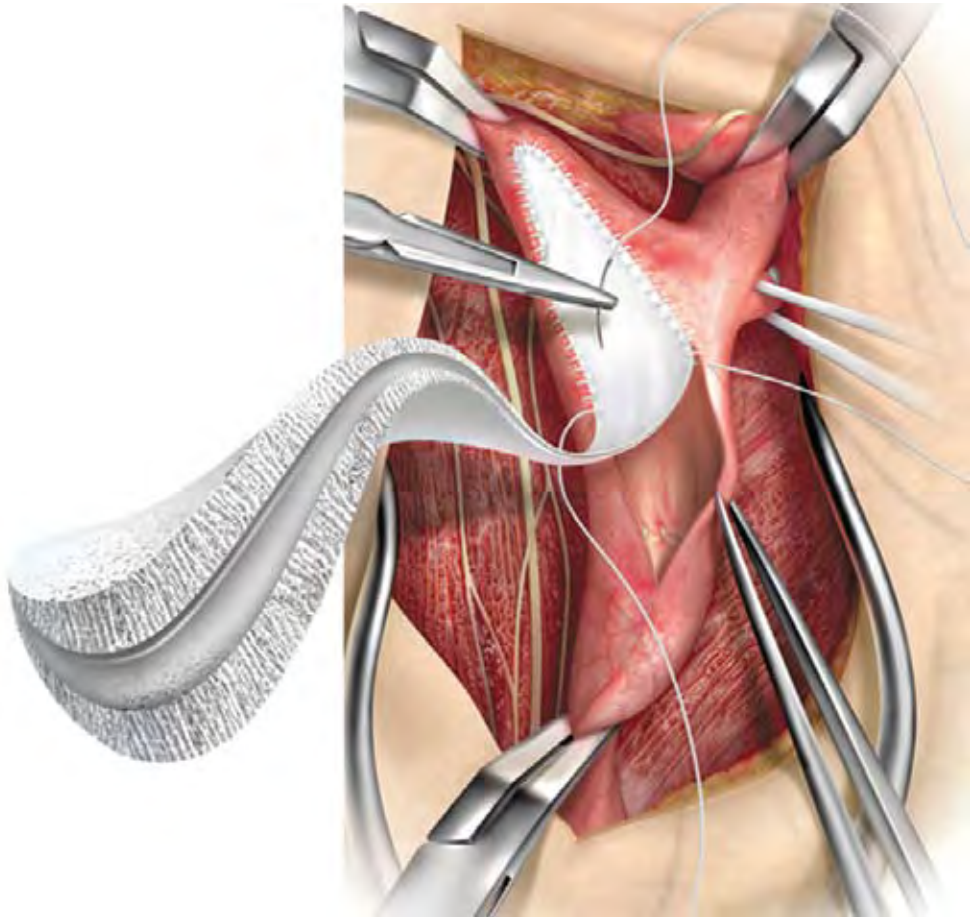
Low-Thrombogenicity

High Strength

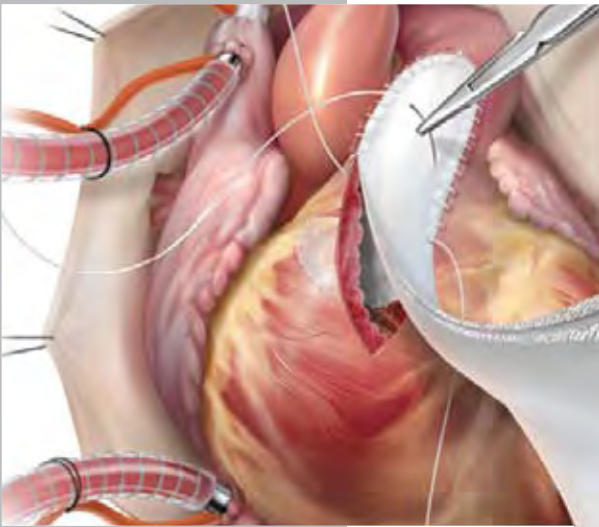
Non-Fraying

Ease of Handling: Conformable

Resterilizable



**We've Closed the Gap
on Suture Line Leakage!**

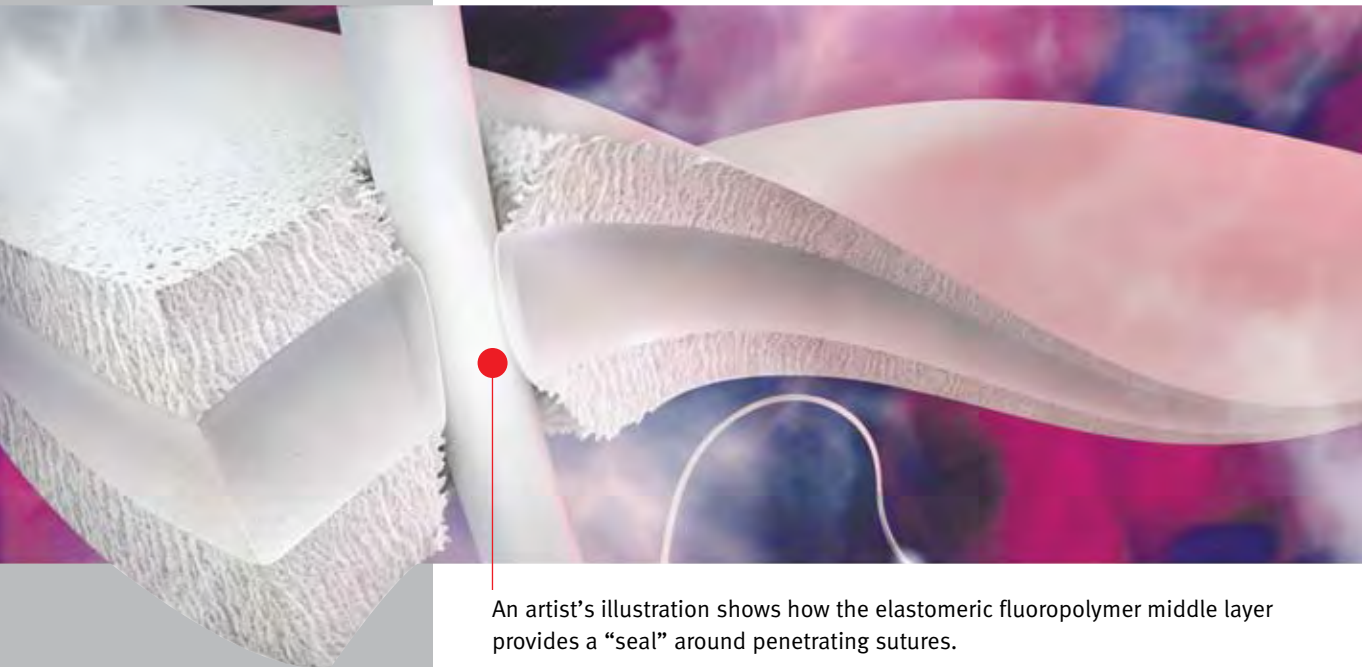


ACUSEAL

CARDIOVASCULAR PATCH

*Data on file

⚠ Attention,
See Instructions for Use



An artist's illustration shows how the elastomeric fluoropolymer middle layer provides a "seal" around penetrating sutures.

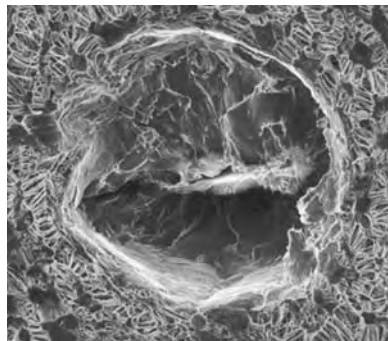
INDICATIONS

For use in cardiovascular patching such as cardiac, great vessel, and peripheral vascular reconstructions.

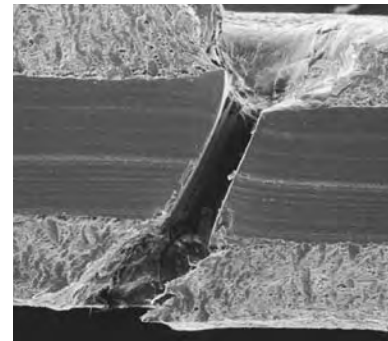
WARNING

Preclinical animal studies suggest that tissue ingrowth may be enhanced in this patch as compared to ePTFE alone. Clinical data concerning the enhanced ingrowth is currently unavailable.

Surface and cross-sectional Scanning Electron Micrographs show the sealing effect of the elastomeric fluoropolymer where pierced.



SURFACE VIEW
250X magnification



CROSS-SECTION VIEW
100X magnification



W. L. GORE & ASSOCIATES, INC.
Flagstaff, AZ 86004

+65.67332882 (Asia Pacific)
00800.6334.4673 (Europe)
800.437.8181 (United States)
928.779.2771 (United States)

goremedical.com

Sizes Available

APPLICATION	CATALOGUE NUMBER	CONFIGURATION	THICKNESS
VASCULAR	1CVX002	1 cm x 9 cm	0.5 mm
	1CVX003	0.8 cm x 7.5 cm	0.5 mm
	1CVX004	2.5 cm x 15 cm	0.5 mm
CARDIAC	1CVX101	3 cm x 6 cm	0.5 mm
	1CVX102	5 cm x 7.5 cm	0.5 mm
	1CVX103	3 cm x 3 cm	0.5 mm

Products listed may not be available in all markets pending regulatory clearance. GORE, ACUSEAL, and designs are trademarks of W. L. Gore & Associates. © 2005, 2008 W. L. Gore & Associates, Inc. AH1341-EN2 MARCH 2008